



**Orchard End, Preston Gubbals Road, Bomere Heath, Shrewsbury SY4 3LT**

3 bedroom detached bungalow—£475,000 Freehold



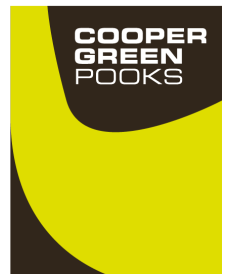
£475,000 Freehold—3 bedroom detached bungalow

[sales@cgpooks.co.uk](mailto:sales@cgpooks.co.uk)

**Occupying a fantastic setting with stunning views over open fields, this beautifully presented and improved detached bungalow offers very spacious, practical, and versatile accommodation throughout, while benefitting from lovely private gardens, extensive driveway, and double garage.**

#### **KEY FEATURES**

- Covered entrance opening to a good-sized inner hallway with decorative tiled flooring and useful storage
- Large living room with windows to two elevations and feature exposed brick fireplace with gas stove
- Re-fitted kitchen/breakfast room, complete with integrated double oven and dishwasher, as well as access to the re-fitted utility which opens onto the garden
- The separate dining room also has a window to rear and glazed double doors onto the garden
- Well-designed master bedroom with built in wardrobes and en-suite shower room
- A further double bedroom, also having built in wardrobes, a single bedroom/study, and lovely family shower/wet room which has also been updated
- The private gardens extend to the side and rear of the property, comprising areas of lawn, paved terraces, planted borders, vegetable patch and established trees
- To the front is an extensive gravelled driveway providing plenty of parking and turning, as well as access to the double garage, which has power, lighting, and an electric door
- A superb location adjoining open fields and countryside, while being within a short walk of Bomere Heath's excellent amenities such as a local store, pub, primary school, tennis and cricket club. Shrewsbury town centre is just a 10-minute drive away and a regular bus service runs from the village
- Sold with no upward chain

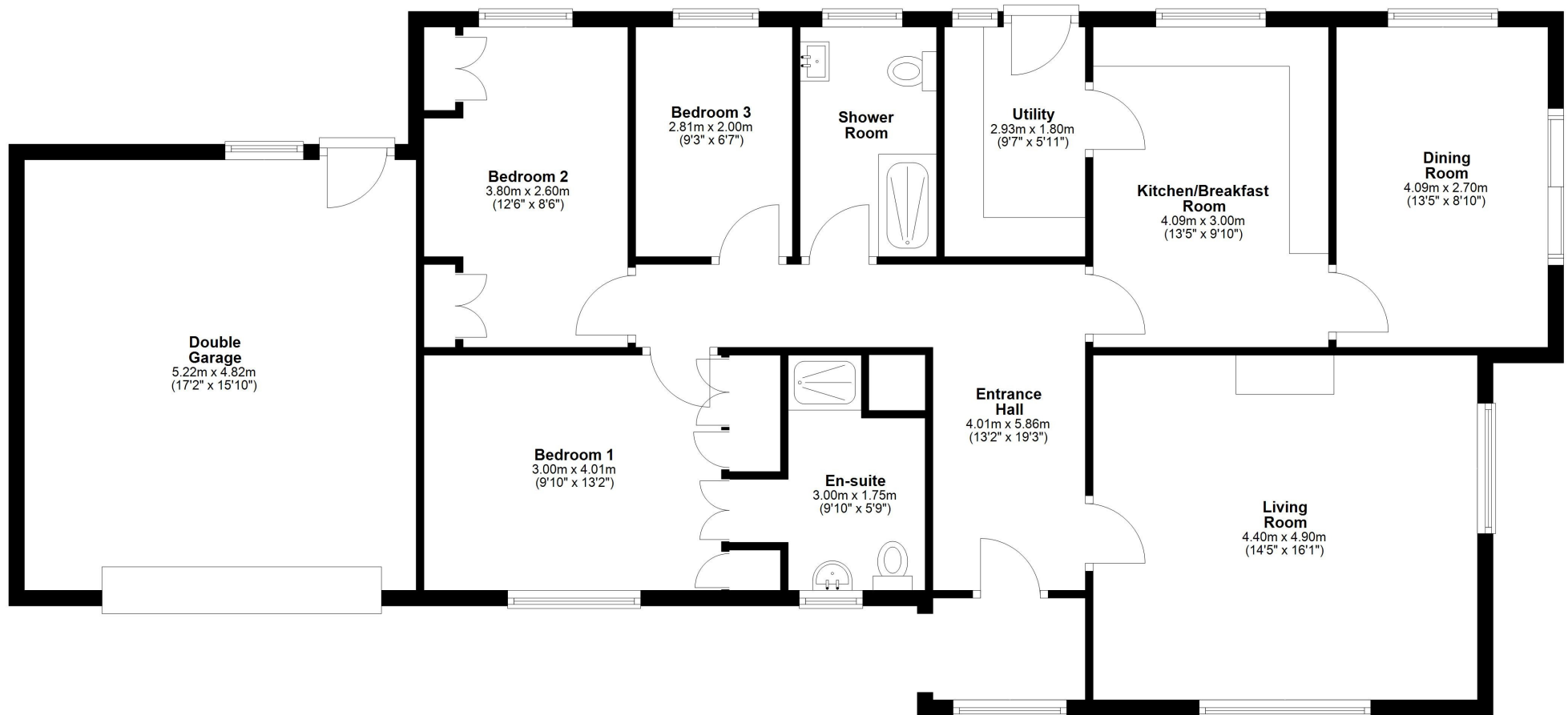


£475,000 Freehold—3 bedroom detached bungalow

sales@cgpooks.co.uk

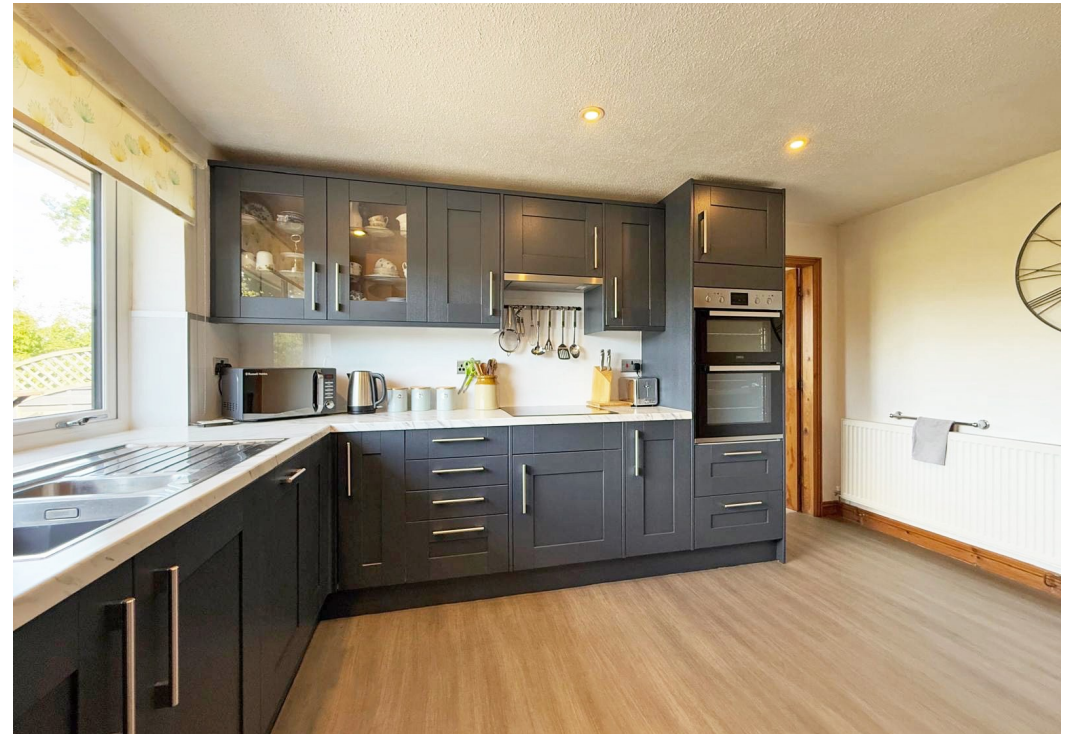
**Ground Floor**

Approx. 140.9 sq. metres (1516.1 sq. feet)



Total area: approx. 140.9 sq. metres (1516.1 sq. feet)



























## Orchard End, Preston Gubbals Road, Bomere Heath, Shrewsbury SY4 3LT

Coopergreenpooks.co.uk

£475,000 Freehold—3 bedroom detached bungalow

[sales@cgpooks.co.uk](mailto:sales@cgpooks.co.uk)



Cooper Green Pooks  
3 Barker Street  
Shrewsbury  
SY1 1QF

[www.cgpooks.co.uk](http://www.cgpooks.co.uk)  
[sales@cgpooks.co.uk](mailto:sales@cgpooks.co.uk)  
01743 276666





# Orchard End, Preston Gubbals Road, Bomere Heath, Shrewsbury SY4 3LT

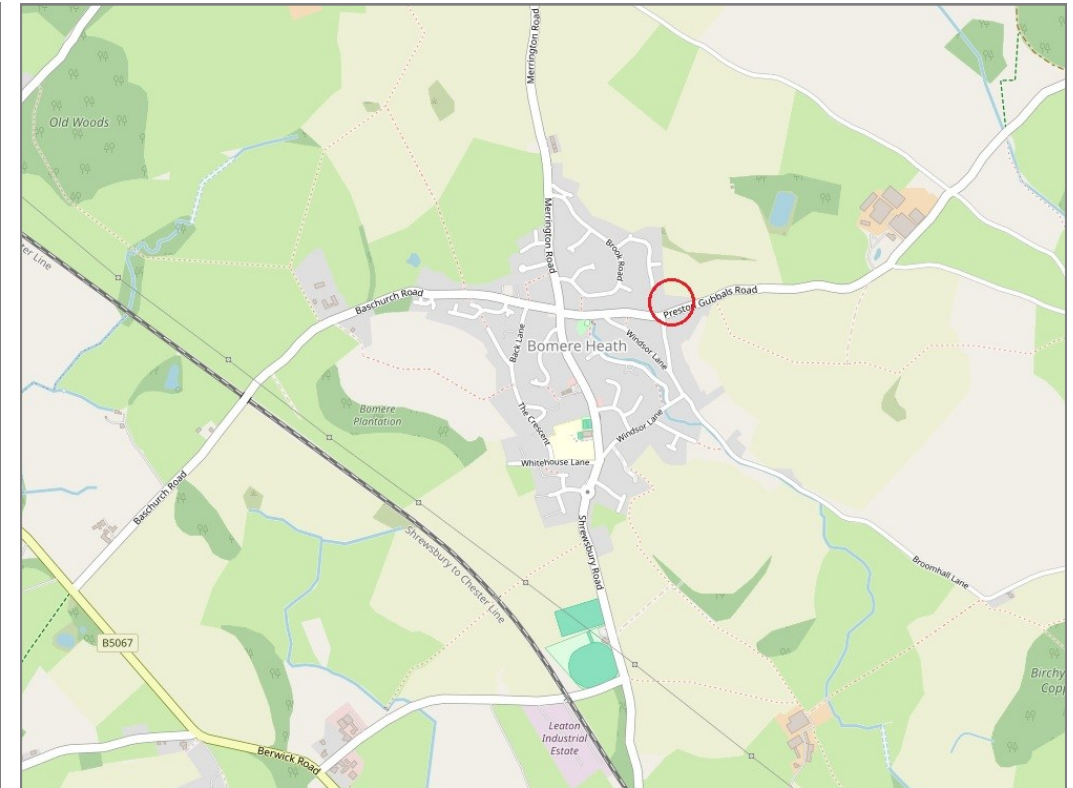
£475,000 Freehold—3 bedroom detached bungalow

sales@cgpooks.co.uk

rightmove

onTheMarket.com

RICS®  
Regulated by RICS



**BOUNDARIES NOT CONFIRMED**

Tenure	<b>Freehold</b>
Local Authority	<b>Shropshire Council</b>
Council Tax	<b>Band C</b>
EPC Band	<b>Band C</b>
Services	<b>All mains services are connected</b>

**Expert mortgage advice available**

3 Barker St, Shrewsbury SY1 1QF

**Cooper Green Pooks**  
**01743 276666**



Your home may be repossessed if you do not keep up repayments on your mortgage.

There may be a fee for mortgage advice. The actual amount you pay will depend upon your circumstances. The fee is up to 1% but a typical fee is 0.3% of the amount borrowed.

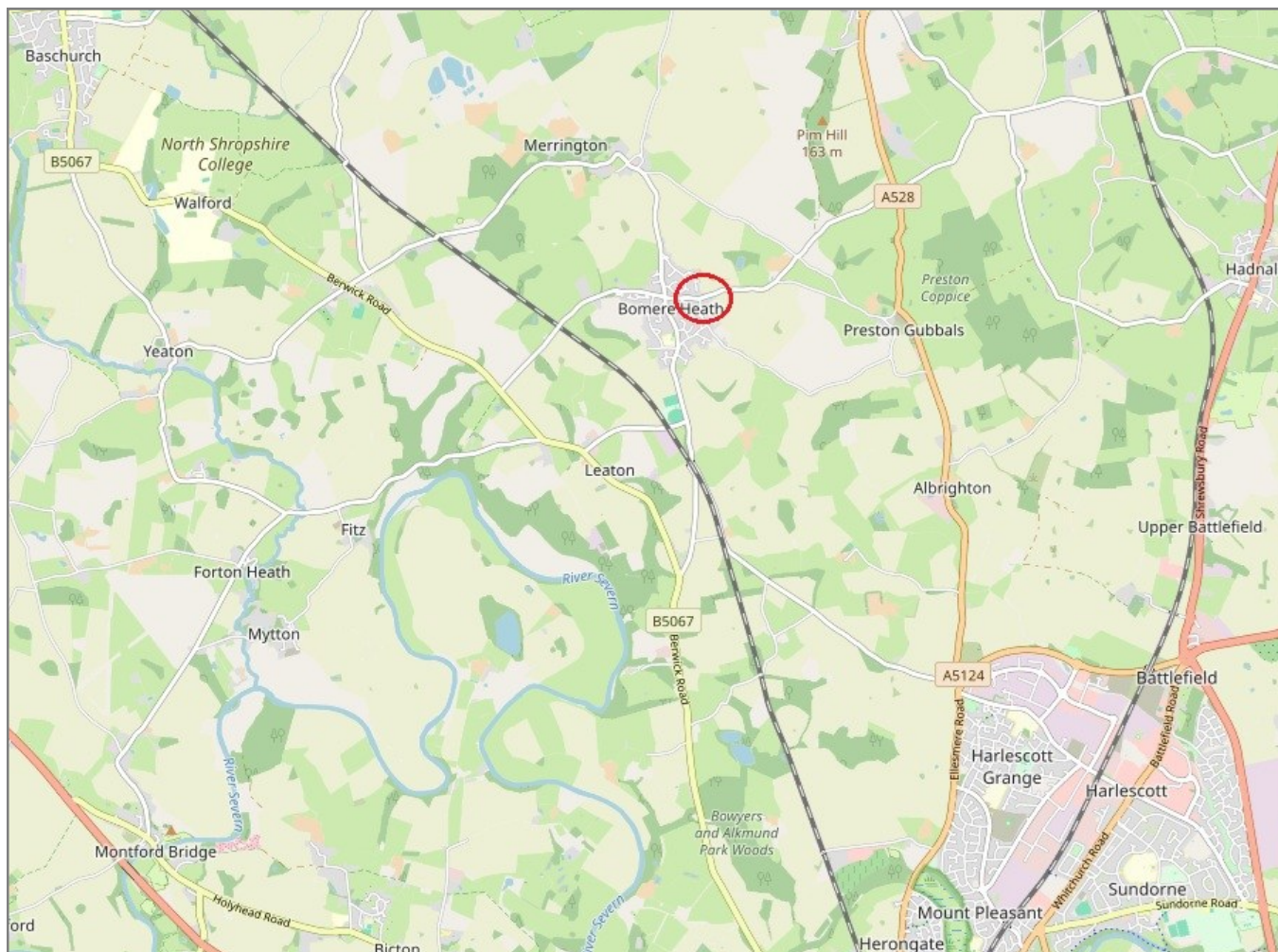


# Orchard End, Preston Gubbals Road, Bomere Heath, Shrewsbury SY4 3LT

Coopergreenpooks.co.uk

£475,000 Freehold—3 bedroom detached bungalow

sales@cgpooks.co.uk



**IMPORTANT NOTICE:** Cooper Green Pooks for themselves and for the lessors or vendors of this property whose agents they are give notice that: 1 No appliances, services or service installations have been tested and no warranty as to suitability or serviceability is implied. Any prospective purchaser or lessee is advised to obtain verification from their surveyor or solicitor. 2. The particulars are set out as a general outline only for the guidance of the intended purchasers or lessees and do not constitute, nor constitute part of, an offer or contract. 3. All descriptions, reference to condition and necessary permissions for use and occupation and other details are given in good faith and are believed to be correct but any intending purchasers or lessees should not rely on them as statements or representation of fact but satisfy themselves by inspection or otherwise as to the correctness of each of them. 4. No person in the employment of Cooper Green Pooks has any authority to make or give any representation or warranty whatsoever in relation to this property. 5. All rentals and prices are quoted exclusive of Stamp Duty, legal and surveyors fees and any other associated purchasers or lessees costs. 6. Floor plans are indicative only and should not be relied on. 7. The plan showing the boundary of the property is indicative only and has not been checked against the legal title so should not be relied on. 8. All dimensions, floor areas and site areas are only approximate and should not be relied on. Dimensions are generally maximum room dimension.